

# CORDIAL CORONA



## CORDIAL HOME CARE

Cordial offers the following property management services.

- Safeguarding of property
- Advertising for rent outs & arranging rentals
- Signing up lease agreement with the tenants
- Remittance of statutory taxes, telephone and electricity bills
- Assistance in obtaining gas and telephone connections
- Periodical cleaning of flat and its premises.
- Repairs and maintenance for electrical and plumbing fixtures



## CORDIAL FOUNDATION

**A DIVISION OF CORDIAL DEVELOPERS AND BUILDERS PVT. LTD.**

Opp. Trivandrum Club, Vazhuthacaud, Trivandrum. Pin: 695010 Tel: 0471 2735128 Fax: 0471 2735128  
Mob: 98474 19999, 98474 15555 email: [marketing@cordialbuilders.com](mailto:marketing@cordialbuilders.com) [www.cordialbuilders.com](http://www.cordialbuilders.com)

# COMMON AMENITIES



## Common Amenities

- Elegant air-conditioned lobby with automatic sensor entry and reception area
- Video door phone connectivity with main entry/security point
- Roof top swimming pool
- Terrace party area
- Fully furnished air-conditioned guest suites
- Split AC in master bedroom
- Wooden flooring in master bedroom
- Internet connectivity for each apartment
- Fitness centre with most modern equipment
- Sauna
- Meditation space
- Air-conditioned multi-purpose hall
- Reading room and provision for reference library
- Intercom facility
- Children's play area (indoor & outdoor)
- Cable TV connection in each apartment
- Individual letter box and name board
- Generator back-up for lifts, water pumps, common lighting and designated points in each apartment
- Reticulated gas supply system
- Security alarm
- Sewage treatment plant
- Provision for 24 hrs security
- 24 hrs water supply & electricity
- Changing room for drivers & servants
- Toilets for drivers and servants

# BUILDING SPECIFICATIONS



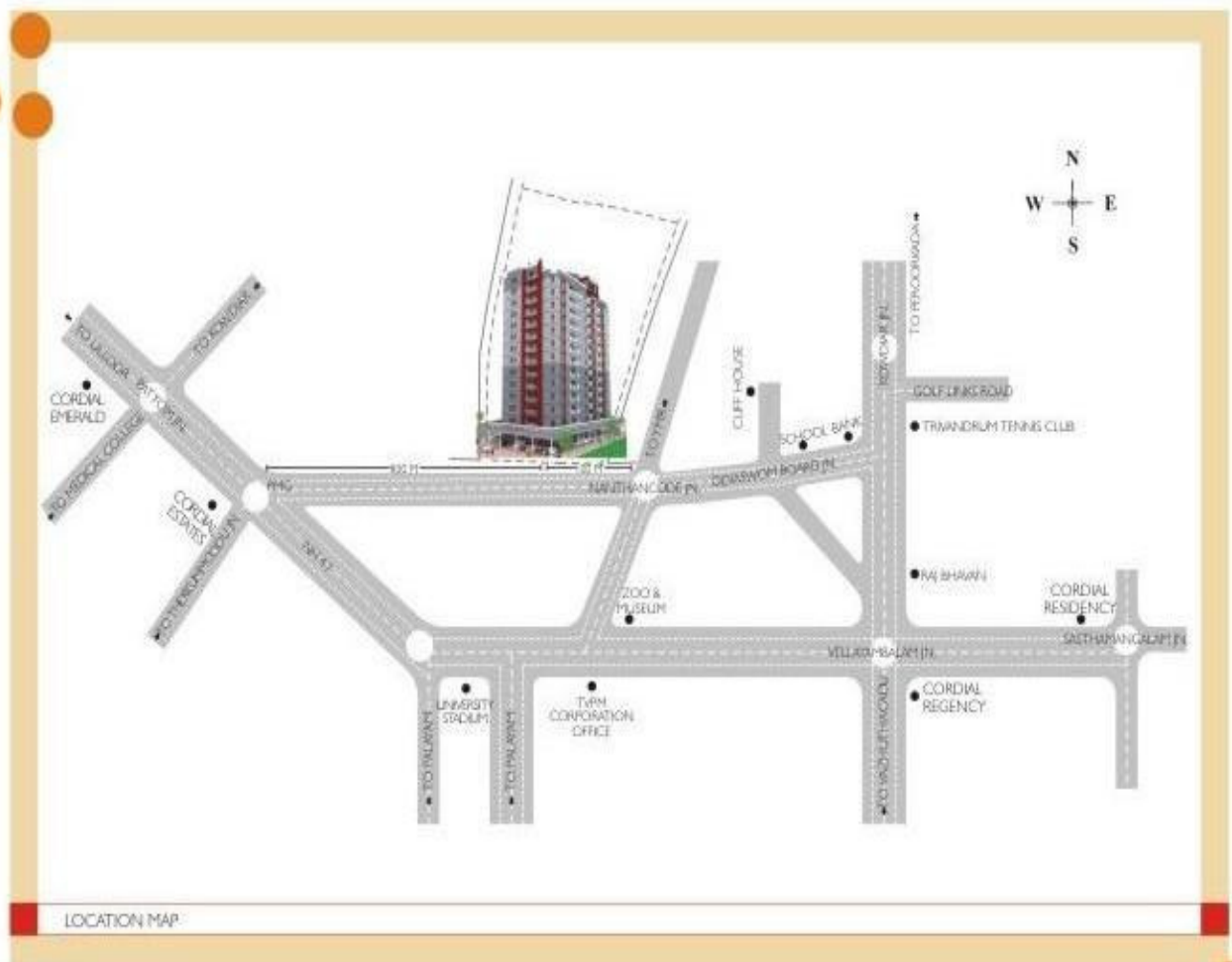
## Building Specifications

Flooring	: Wooden flooring for master bedroom. Vitrified tiles for the remaining area, except toilets.
Painting	: Putty with acrylic distemper for internal walls & ceiling. Cornice in foyer, living and dining. Painted finish for doors.
Toilets	: Anti skid ceramic tiles for floor and glazed tiles for wall upto door height. Sanitary fixtures matching with tiles, wall mounted EWC with concealed flush tank, geaser provision and health faucet in all toilets except servant's toilet.
Kitchen and work area:	Counter with granite top and stainless steel sink. Glazed tiles above the counter to a height of 45 cms. Single bowl sink with granite top in work area.
Doors	: Polished teak wood entrance door and moulded internal doors. Hard wood frames with wooden panel doors for toilet.
Windows	: Aluminium powder coated with glazed shutters and safety grills.
Electrical	: All wiring with power plugs. Adequate light and fan points. Points controlled by ELCB and MCB with independent KSEB metre. Modular switches.
Generator	: Generator backup for elevators, common lighting, water pumps and designated points in each apartment.
Elevators	: 4 numbers - fully automatic (including bed) elevators
Cable TV	: Connection in living and master bedroom (subject to prevailing govt. rules)
Telephone	: Wiring for telephone in living and master bedroom.
Water supply	: Water supply through sump and overhead tank.
Air conditioning	: Split AC in master bedroom. Provision in other bedrooms.
Fire safety	: Fire protection systems as per rules
Car parking	: Covered car parking (at extra cost)

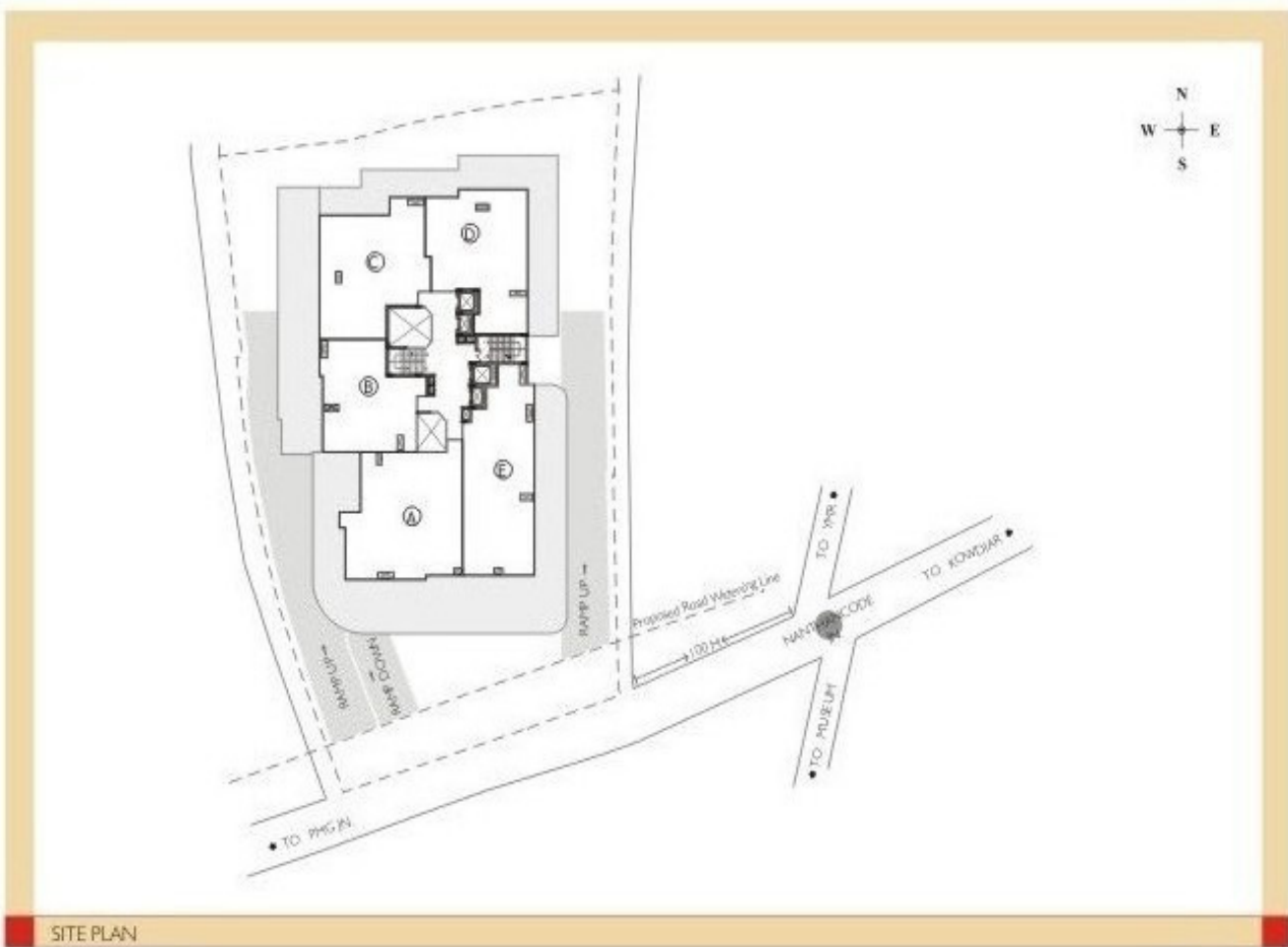
# SITE PLANS



## SITE PLAN-1.



## SITE PLAN-2.

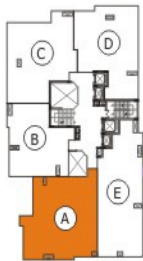


# FLOOR PLANS

## FLOOR PLAN-A



**TYPE A**  
(1st Floor to 12th Floor)  
3 BED ROOM APARTMENT  
AREA = 1700 sq.ft.



# FLOOR PLAN-A1



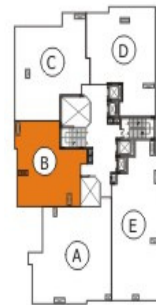
**TYPE A13**  
(13TH FLOOR)  
PENT HOUSE WITH PRIVATE TERRACE  
AREA = 1725 sq.ft.  
TERRACE AREA = 1410 sq.ft.



# FLOOR PLAN-B



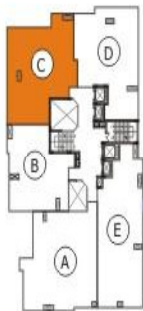
**TYPE B**  
(3rd Floor to 12th Floor)  
2 BED ROOM APARTMENT  
AREA = 1220 sq.ft.



# FLOOR PLAN-C



**TYPE C**  
(2nd Floor to 12th Floor)  
3 BED ROOM APARTMENT  
AREA = 1555 sq.ft.



# FLOOR PLAN-D



**TYPE D**  
(2nd Floor to 12th Floor)  
3 BED ROOM APARTMENT  
AREA = 1510 sq.ft.



# FLOOR PLAN-E



**TYPE E**  
(1st Floor to 12th Floor)  
3 BED ROOM APARTMENT  
AREA =1630 sq.ft.

