



**CORDIAL FOUNDATION**

A DIVISION OF CORDIAL DEVELOPERS AND BUILDERS PVT. LTD.

Opp. Trivandrum Club, Vazhuthacaud, Trivandrum. Pin: 695010 Tel: 0471 2735128 Fax: 0471 2735128  
Mob: 98474 19999, 98474 15555 email: marketing@cordialbuilders.com www.cordialbuilders.com

max

# Queen's Tower



harmon in life



**cyber castle**

Adjacent to Technopark  
NH Bypass, Trivandrum



### CORDIAL HOME CARE

Cordial offers the following property management services.

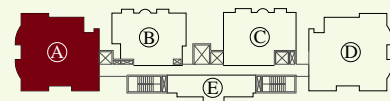
- Safeguarding of property
- Advertising for rent outs & arranging rentals
- Signing up lease agreement with the tenants
- Remittance of statutory taxes, telephone and electricity bills
- Assistance in obtaining gas and telephone connections
- Periodical cleaning of flat and its premises.
- Repairs and maintenance for electrical and plumbing fixtures



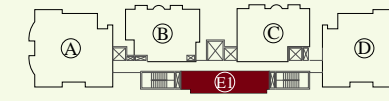
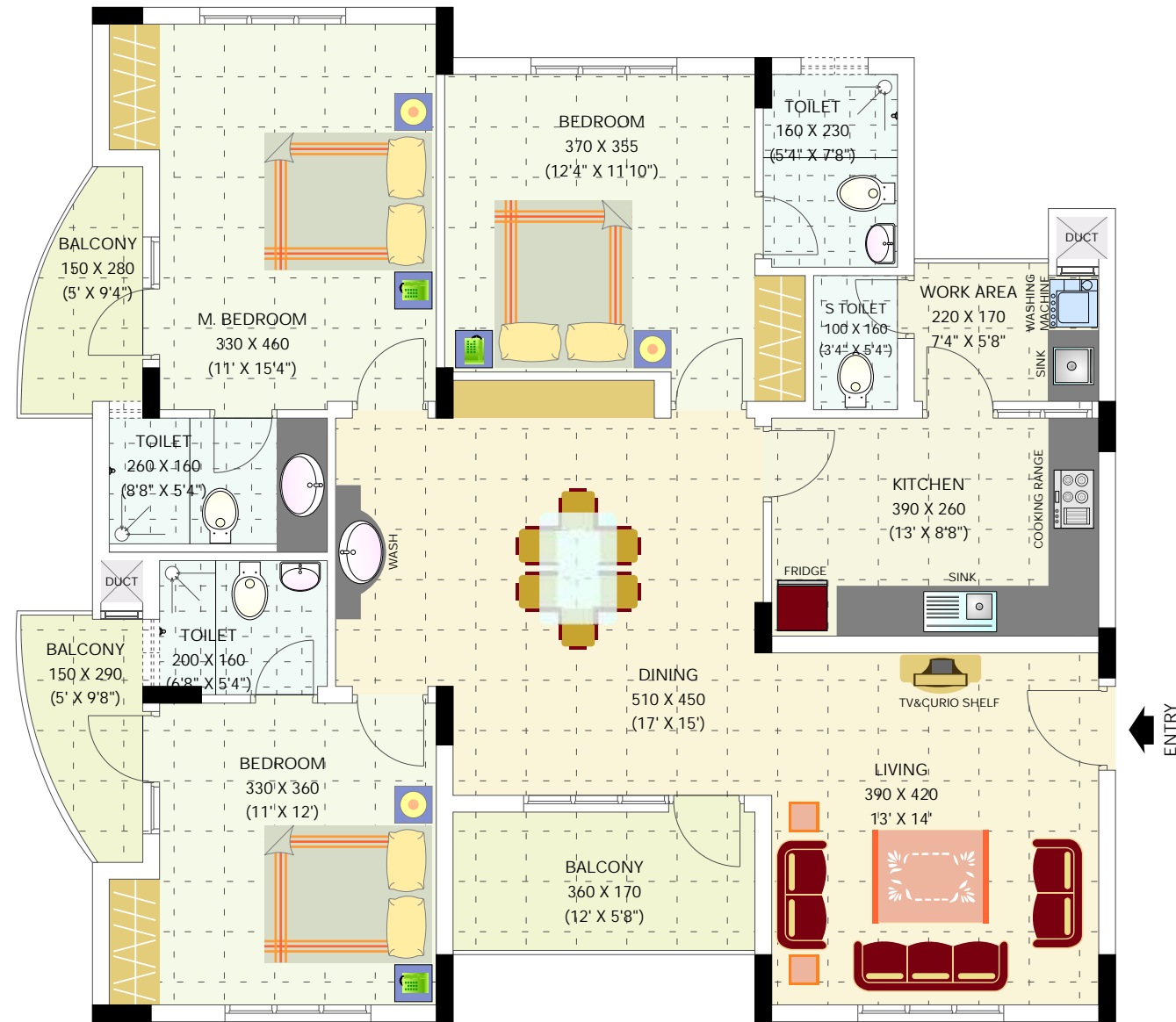
### Queen's Tower



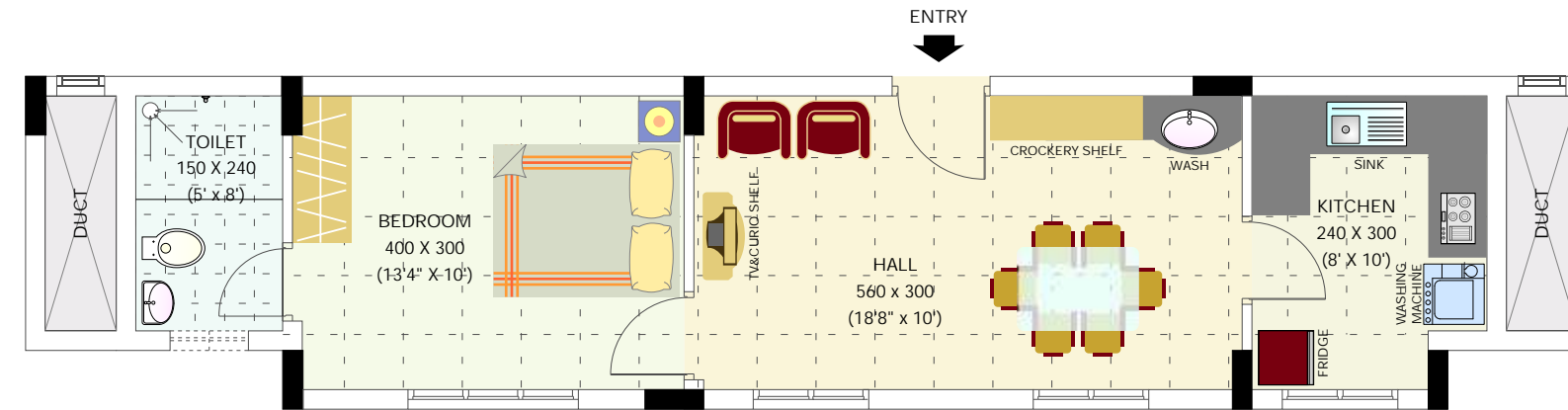
Adjacent to Technopark  
NH Bypass, Trivandrum

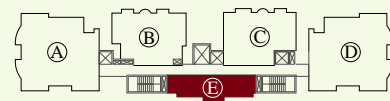


TYPE A. 3 Bedroom Area 1785 sq.ft.  
(First floor to 12th floor typical)

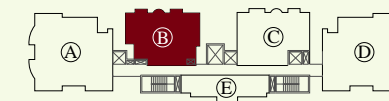
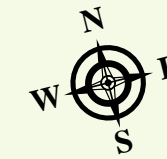
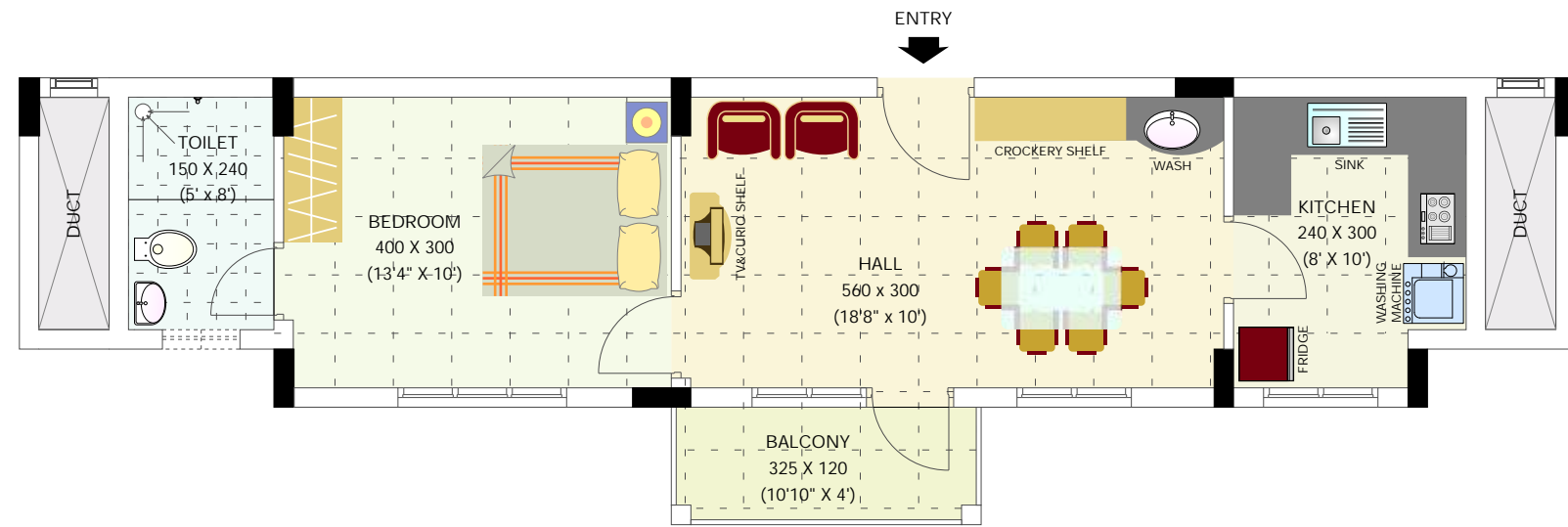


TYPE E1. 1 Bedroom Area 630 sq.ft.  
(Ground floor, 11th floor and 12th floor typical)



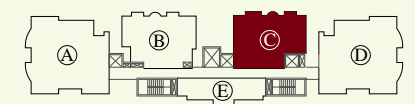


TYPE E. 1 Bedroom Area 675 sq.ft.  
(First floor to 10th floor typical)

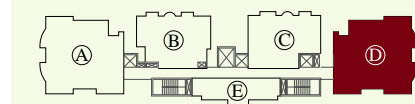
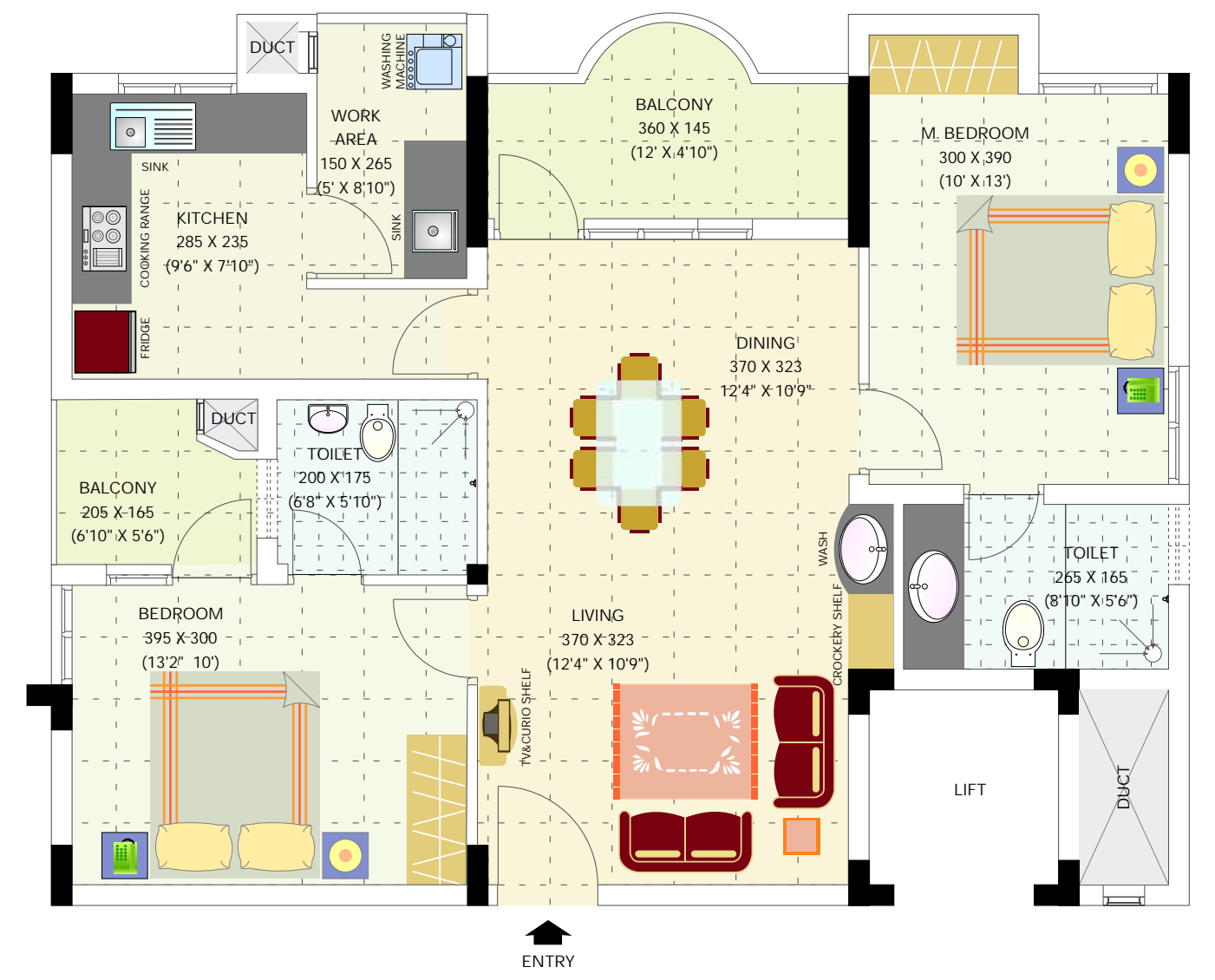


TYPE B. 2 Bedroom Area 1155 sq.ft.  
(First floor to 12th floor typical)





TYPE C. 2 Bedroom Area 1165 sq.ft. (Ground floor to 12th floor typical)



TYPE D. 3 Bedroom Area 1805 sq.ft. (First floor to 12th floor typical)

